

## CONTENTS / INDEX

### 1.4-01 ISO 7241 A SERIES HYDRAULIC QUICK COUPLINGS



### 1.4-02 ISO 7241 B SERIES HYDRAULIC QUICK COUPLINGS



### 1.4-03 DOUBLE SHUT-OFF COUPLINGS WITH HARDEND STEEL POPPETS



### 1.4-04 PUSH AND PULL TYPE HYDRAULIC QUICK COUPLINGS



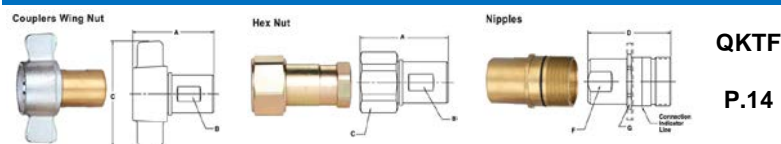
### 1.4-05 FLAT FACE HYDRAULIC QUICK COUPLINGS / INTERNATIONAL INTERCHANGE ISO 16028



### 1.4-05 FLAT FACE HYDRAULIC QUICK COUPLINGS / INTERNATIONAL INTERCHANGE ISO 16028



### 1.4-06 THREAD-TO-CONNECT UNDER PRESSURE COUPLINGS



### 1.4-07 THREAD LOCKED TYPE HYDRAULIC COUPLINGS



### 1.4-08 MOLD COOLANT-LINE QUICK COUPLERS/ D-M-E PARKER AND POSTER INTERCHANGE



### 1.4-09 STRAIGHT THROUGH COUPLINGS / INDUSTRIAL INTERCHANGE



### 1.4-10 GARDEN HOSE COUPLINGS



### 1.4-11 DUST PLUGS AND DUST CAPS



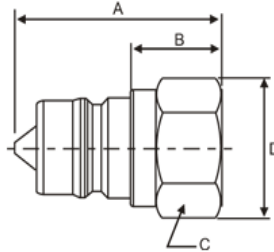
## 1.4-01 ISO 7241 A SERIES HYDRAULIC QUICK COUPLINGS

### Specifications of KZE Series

Body size (in)	1/4	3/8	1/2	3/4	1
Rated pressure (Bar)	350	300	300	250	200
Material:	Carbon steel				
Standard seal material:	NBR (other material is available on request)				
Temperature range (Std seals):	-20°C to +80°C				

### Nipples

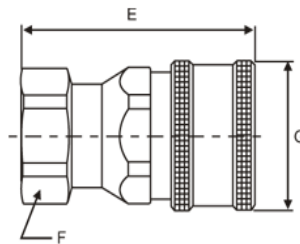
#### Female Thread



Part No.	Thread size BSPP	A Overall Length (mm.)	B Exposed Length (mm.)	C Hex Size (mm.)	D Largest Diameter (mm.)	Part No.	Thread size NPT	A Overall Length (in.)	B Exposed Length (in.)	C Hex Size (in.)	D Largest Diameter (in.)
KZE-01PF	G1/8	32	15	14	17	KZE-N01PF	NPT1/8	1.27	0.58	0.56	0.65
KZE-02PF	G1/4	32	15	19	22	KZE-N02PF	NPT1/4	1.27	0.58	0.75	0.87
KZE-03PF	G3/8	37	18	22	26	KZE-N03PF	NPT3/8	1.47	0.72	0.88	1.01
KZE-04PF	G1/2	46	20	27	31	KZE-N04PF	NPT1/2	1.82	0.78	1.06	1.23
KZE-06PF	G3/4	58	30	35	40	KZE-N06PF	NPT3/4	2.29	1.18	1.38	1.59
KZE-08PF	G1	66	34	41	48	KZE-N08PF	NPT1	2.58	1.34	1.62	1.88
KZE-10PF	G1 1/4	75	36	54	59	KZE-N10PF	NPT1 1/4	2.95	1.41	2.12	2.32
KZE-12PF	G1 1/2	86	38	60	68	KZE-N12PF	NPT1 1/2	3.38	1.49	2.36	2.67
KZE-16PF	G2	100	77	77	84	KZE-N16PF	NPT2	3.93	3.03	3.03	3.3

### Couplers

#### Female Thread



Part No.	Thread size BSPP	E Overall Length (mm.)	F Hex Size (mm.)	G Largest Diameter (mm.)	Part No.	Thread size NPT	E Overall Length (mm.)	F Hex Size (mm.)	G Largest Diameter (mm.)
KZE-01SF	G1/8	47	22	27	KZE-N01SF	NPT1/8	1.85	0.88	1.08
KZE-02SF	G1/4	47	22	27	KZE-N02SF	NPT1/4	1.85	0.88	1.08
KZE-03SF	G3/8	55	27	32	KZE-N03SF	NPT3/8	2.18	1.06	1.27
KZE-04SF	G1/2	70	32	39	KZE-N04SF	NPT1/2	2.75	1.25	1.52
KZE-06SF	G3/4	85	41	48	KZE-N06SF	NPT3/4	3.38	1.62	1.9
KZE-08SF	G1	104	48	54	KZE-N08SF	NPT1	4.11	1.88	2.14
KZE-10SF	G1 1/4	110	54	69	KZE-N10SF	NPT1 1/4	4.33	2.12	2.71
KZE-12SF	G1 1/2	128	60	82	KZE-N12SF	NPT1 1/2	5.03	2.36	3.22
KZE-16SF	G2	153	77	100	KZE-N16SF	NPT2	6.02	3.03	3.93

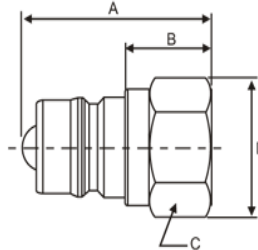
## 1.4-01 ISO 7241 A SERIES HYDRAULIC QUICK COUPLINGS

### Specifications of KZEB Series Steel Ball Type

Body size (in)	1/4	3/8	1/2	3/4	1
Rated pressure (Bar)	350	300	300	250	200
Material:	Carbon steel				
Standard seal material:	NBR (other material is available on request)				
Temperature range (Std seals):	-20°C to +80°C				

### Nipples

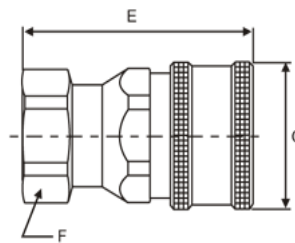
#### Female Thread



Part No.	Thread size BSPP	A Overall Length (mm.)	B Exposed Length (mm.)	C Hex Size (mm.)	D Largest Diameter (mm.)	Part No.	Thread size NPT	A Overall Length (in.)	B Exposed Length (in.)	C Hex Size (in.)	D Largest Diameter (in.)
KZEB-01PF	G1/8	32	15	14	17	KZEB-N01PF	NPT1/8	1.27	0.58	0.56	0.65
KZEB-02PF	G1/4	32	15	19	22	KZEB-N02PF	NPT1/4	1.27	0.58	0.75	0.87
KZEB-03PF	G3/8	37	18	22	26	KZEB-N03PF	NPT3/8	1.47	0.72	0.88	1.01
KZEB-04PF	G1/2	46	20	27	31	KZEB-N04PF	NPT1/2	1.82	0.78	1.06	1.23
KZEB-06PF	G3/4	58	30	35	40	KZEB-N06PF	NPT3/4	2.29	1.18	1.38	1.59
KZEB-08PF	G1	66	34	41	48	KZEB-N08PF	NPT1	2.58	1.34	1.62	1.88
KZEB-10PF	G1 1/4	75	36	54	59	KZEB-N10PF	NPT1 1/4	2.95	1.41	2.12	2.32
KZEB-12PF	G1 1/2	86	38	60	68	KZEB-N12PF	NPT1 1/2	3.38	1.49	2.36	2.67
KZEB-16PF	G2	100	77	77	84	KZEB-N16PF	NPT2	3.93	3.03	3.03	3.3

### Couplers

#### Female Thread



Part No.	Thread size BSPP	E Overall Length (mm.)	F Hex Size (mm.)	G Largest Diameter (mm.)	Part No.	Thread size NPT	E Overall Length (mm.)	F Hex Size (mm.)	G Largest Diameter (mm.)
KZEB-01SF	G1/8	47	22	27	KZEB-01SF	NPT1/8	1.85	0.88	1.08
KZEB-02SF	G1/4	47	22	27	KZEB-02SF	NPT1/4	1.85	0.88	1.08
KZEB-03SF	G3/8	55	27	32	KZEB-03SF	NPT3/8	2.18	1.06	1.27
KZEB-04SF	G1/2	70	32	39	KZEB-04SF	NPT1/2	2.75	1.25	1.52
KZEB-06SF	G3/4	85	41	48	KZEB-06SF	NPT3/4	3.36	1.62	1.9
KZEB-08SF	G1	104	48	54	KZEB-08SF	NPT1	4.11	1.88	2.14
KZEB-10SF	G1 1/4	110	54	69	KZEB-10SF	NPT1 1/4	4.33	2.12	2.71
KZEB-12SF	G1 1/2	128	60	82	KZEB-12SF	NPT1 1/2	5.03	2.36	3.22
KZEB-16SF	G2	153	77	100	KZEB-16SF	NPT2	6.02	3.03	3.93

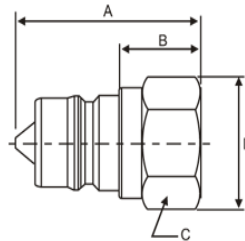
## 1.4-01 ISO 7241 A SERIES HYDRAULIC QUICK COUPLINGS

### Specifications of KZESS Series

Body size (in)	1/4	3/8	1/2	3/4	1
Rated pressure (Bar)	150	100	100	100	75
Material:	Stainless Steel				
Standard seal material:	NBR (other material is available on request)				
Temperature range (Std seals):	-20°C to +80°C				

### Nipples

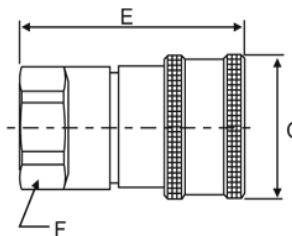
#### Female Thread



Part No.	Thread size BSPP	A Overall Length (mm.)	B Exposed Length (mm.)	C Hex Size (mm.)	D Largest Diameter (mm.)	Part No.	Thread size NPT	A Overall Length (in.)	B Exposed Length (in.)	C Hex Size (in.)	D Largest Diameter (in.)
KZESS-01PF	G1/8	32	15	14	17	KZESS-N01PF	NPT1/8	1.27	0.58	0.56	0.65
KZESS-02PF	G1/4	32	15	19	22	KZESS-N02PF	NPT1/4	1.27	0.58	0.75	0.87
KZESS-03PF	G3/8	37	18	22	26	KZESS-N03PF	NPT3/8	1.47	0.72	0.88	1.01
KZESS-04PF	G1/2	46	20	27	31	KZESS-N04PF	NPT1/2	1.82	0.78	1.06	1.23
KZESS-06PF	G3/4	58	30	35	40	KZESS-N06PF	NPT3/4	2.29	1.18	1.38	1.59
KZESS-08PF	G1	66	34	41	48	KZESS-N08PF	NPT1	2.58	1.34	1.62	1.88
KZESS-10PF	G1 1/4	75	36	54	59	KZESS-N10PF	NPT1 1/4	2.95	1.41	2.12	2.32
KZESS-12PF	G1 1/2	86	38	60	68	KZESS-N12PF	NPT1 1/2	3.38	1.49	2.36	2.67
KZESS-16PF	G2	100	77	77	84	KZESS-N16PF	NPT2	3.93	3.03	3.03	3.3

### Couplers

#### Female Thread



Part No.	Thread size BSPP	E Overall Length (mm.)	F Hex Size (mm.)	G Largest Diameter (mm.)	Part No.	Thread size NPT	E Overall Length (mm.)	F Hex Size (mm.)	G Largest Diameter (mm.)
KZESS-01SF	G1/8	47	22	27	KZESS-01SF	NPT1/8	1.85	0.88	1.08
KZESS-02SF	G1/4	47	22	27	KZESS-02SF	NPT1/4	1.85	0.88	1.08
KZESS-03SF	G3/8	55	27	32	KZESS-03SF	NPT3/8	2.18	1.06	1.27
KZESS-04SF	G1/2	70	32	39	KZESS-04SF	NPT1/2	2.75	1.25	1.52
KZESS-06SF	G3/4	85	41	48	KZESS-06SF	NPT3/4	3.36	1.62	1.9
KZESS-08SF	G1	104	48	54	KZESS-08SF	NPT1	4.11	1.88	2.14
KZESS-10SF	G1 1/4	110	54	69	KZESS-10SF	NPT1 1/4	4.33	2.12	2.71
KZESS-12SF	G1 1/2	128	60	82	KZESS-12SF	NPT1 1/2	5.03	2.36	3.22
KZESS-16SF	G2	153	77	100	KZESS-16SF	NPT2	6.02	3.03	3.93

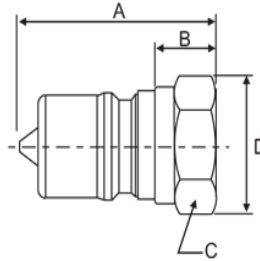
## 1.4-02 ISO 7241 B SERIES HYDRAULIC QUICK COUPLINGS

### Specifications of KZB Series

Body size (in)	1/4	3/8	1/2	3/4	1
Rated pressure (Bar)	350	300	300	250	200
Material:	Carbon steel				
Standard seal material:	NBR (other material is available on request)				
Temperature range (Std seals):	-20°C to +80°C				

### Nipples

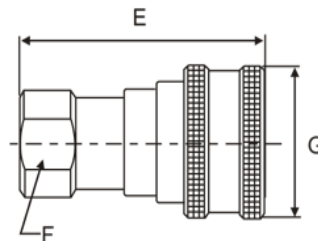
#### Female Thread



Part No.	Thread size BSPP	A Overall Length (mm.)	B Exposed Length (mm.)	C Hex Size (mm.)	D Largest Diameter (mm.)	Part No.	Thread size NPT	A Overall Length (in.)	B Exposed Length (in.)	C Hex Size (in.)	D Largest Diameter (in.)
KZB-01PF	G1/8	41	10	14	17	KZB-N01PF	NPT1/8	1.61	0.41	0.56	0.65
KZB-02PF	G1/4	35	17	19	22	KZB-N02PF	NPT1/4	1.39	0.65	0.75	0.87
KZB-03PF	G3/8	38	14	22	26	KZB-N03PF	NPT3/8	1.5	0.54	0.88	1.01
KZB-04PF	G1/2	44	18	28	33	KZB-N04PF	NPT1/2	1.75	0.69	1.12	1.3
KZB-06PF	G3/4	55	20	35	40	KZB-N06PF	NPT3/4	2.16	0.79	1.38	1.59
KZB-08PF	G1	74	25	41	48	KZB-N08PF	NPT1	2.91	0.99	1.62	1.88
KZB-10PF	G1 1/4	76	25	54	59	KZB-N10PF	NPT1 1/4	2.99	0.99	2.13	2.32
KZB-12PF	G1 1/2	82	26	63	69	KZB-N12PF	NPT1 1/2	3.22	1.02	2.48	2.72
KZB-16PF	G2	88	28	77	84	KZB-N16PF	NPT2	3.46	1.1	3.03	3.3

### Couplers

#### Female Thread



Part No.	Thread size BSPP	E Overall Length (mm.)	F Hex Size (mm.)	G Largest Diameter (mm.)	Part No.	Thread size NPT	E Overall Length (mm.)	F Hex Size (mm.)	G Largest Diameter (mm.)
KZB-01SF	G1/8	48	17	24	KZB-N01SF	NPT1/8	1.9	0.68	0.96
KZB-02SF	G1/4	57	21	29	KZB-N02SF	NPT1/4	2.26	0.81	1.14
KZB-03SF	G3/8	63	22	36	KZB-N03SF	NPT3/8	2.49	0.88	1.40
KZB-04SF	G1/2	73	28	45	KZB-N04SF	NPT1/2	2.87	1.12	1.77
KZB-06SF	G3/4	90	33	54	KZB-N06SF	NPT3/4	3.56	1.31	2.14
KZB-08SF	G1	106	41	64	KZB-N08SF	NPT1	4.18	1.62	2.52
KZB-10SF	G1 1/4	115	54	79	KZB-N10SF	NPT1 1/4	4.53	2.13	3.11
KZB-12SF	G1 1/2	124	63	79	KZB-N12SF	NPT1 1/2	4.88	2.48	3.11
KZB-16SF	G2	132	77	109	KZB-N16SF	NPT2	5.2	3.03	4.29

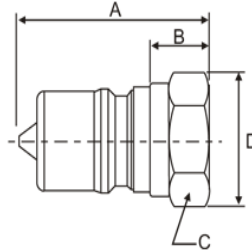
## 1.4-02 ISO 7241 B SERIES HYDRAULIC QUICK COUPLINGS

### Specifications of KZD Series

Body size (in)	1/4	3/8	1/2	3/4	1
Rated pressure (Bar)	75	75	45	45	45
Material:	Brass				
Standard seal material:	NBR (other material is available on request)				
Temperature range (Std seals):	-20°C to +80°C				

### Nipples

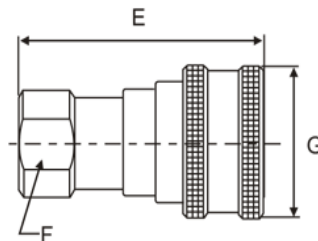
#### Female Thread



Part No.	Thread size BSPP	A Overall Length (mm.)	B Exposed Length (mm.)	C Hex Size (mm.)	D Largest Diameter (mm.)	Part No.	Thread size NPT	A Overall Length (in.)	B Exposed Length (in.)	C Hex Size (in.)	D Largest Diameter (in.)
KZD-01PF	G1/8	41	10	14	17	KZD-N01PF	NPT1/8	1.61	0.41	0.56	0.65
KZD-02PF	G1/4	35	17	19	22	KZD-N02PF	NPT1/4	1.39	0.65	0.75	0.87
KZD-03PF	G3/8	38	14	22	26	KZD-N03PF	NPT3/8	1.5	0.54	0.88	1.01
KZD-04PF	G1/2	44	18	28	33	KZD-N04PF	NPT1/2	1.75	0.69	1.12	1.3
KZD-06PF	G3/4	55	20	35	40	KZD-N06PF	NPT3/4	2.16	0.79	1.38	1.59
KZD-08PF	G1	74	25	41	48	KZD-N08PF	NPT1	2.91	0.99	1.62	1.88
KZD-10PF	G1 1/4	76	25	54	59	KZD-N10PF	NPT1 1/4	2.99	0.99	2.13	2.32
KZD-12PF	G1 1/2	82	26	63	69	KZD-N12PF	NPT1 1/2	3.22	1.02	2.48	2.72
KZD-16PF	G2	88	28	77	84	KZD-N16PF	NPT2	3.46	1.1	3.03	3.3

### Couplers

#### Female Thread



Part No.	Thread size BSPP	E Overall Length (mm.)	F Hex Size (mm.)	G Largest Diameter (mm.)	Part No.	Thread size NPT	E Overall Length (mm.)	F Hex Size (mm.)	G Largest Diameter (mm.)
KZD-01SF	G1/8	48	17	24	KZD-N01SF	NPT1/8	1.9	0.68	0.96
KZD-02SF	G1/4	57	21	29	KZD-N02SF	NPT1/4	2.26	0.81	1.14
KZD-03SF	G3/8	63	22	36	KZD-N03SF	NPT3/8	2.49	0.88	1.4
KZD-04SF	G1/2	73	28	45	KZD-N04SF	NPT1/2	2.87	1.12	1.77
KZD-06SF	G3/4	90	33	54	KZD-N06SF	NPT3/4	3.56	1.31	2.14
KZD-08SF	G1	106	41	64	KZD-N08SF	NPT1	4.18	1.62	2.52
KZD-10SF	G1 1/4	115	54	79	KZD-N10SF	NPT1 1/4	4.53	2.13	3.11
KZD-12SF	G1 1/2	124	63	79	KZD-N12SF	NPT1 1/2	4.88	2.48	3.11
KZD-16SF	G2	132	77	109	KZD-N16SF	NPT2	5.2	3.03	4.29

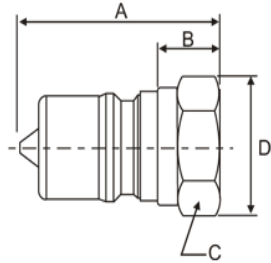
## 1.4-02 ISO 7241 B SERIES HYDRAULIC QUICK COUPLINGS

### Specifications of KZBSS Series

Body size (in)	1/4	3/8	1/2	3/4	1
Rated pressure (Bar)	150	100	100	100	75
Material:	Stainless Steel				
Standard seal material:	NBR (other material is available on request)				
Temperature range (Std seals):	-20°C to +80°C				

### Nipples

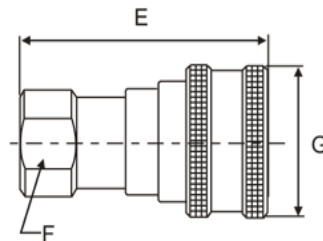
#### Female Thread



Part No.	Thread size BSPP	A Overall Length (mm.)	B Exposed Length (mm.)	C Hex Size (mm.)	D Largest Diameter (mm.)	Part No.	Thread size NPT	A Overall Length (in.)	B Exposed Length (in.)	C Hex Size (in.)	D Largest Diameter (in.)
KZBSS-01PF	G1/8	41	10	14	17	KZBSS-N01PF	NPT1/8	1.61	0.41	0.56	0.65
KZBSS-02PF	G1/4	35	17	19	22	KZBSS-N02PF	NPT1/4	1.39	0.65	0.75	0.87
KZBSS-03PF	G3/8	38	14	22	26	KZBSS-N03PF	NPT3/8	1.5	0.54	0.88	1.01
KZBSS-04PF	G1/2	44	18	28	33	KZBSS-N04PF	NPT1/2	1.75	0.69	1.12	1.3
KZBSS-06PF	G3/4	55	20	35	40	KZBSS-N06PF	NPT3/4	2.16	0.79	1.38	1.59
KZBSS-08PF	G1	74	25	41	48	KZBSS-N08PF	NPT1	2.91	0.99	1.62	1.88
KZBSS-10PF	G1 1/4	76	25	54	59	KZBSS-N10PF	NPT1 1/4	2.99	0.99	2.13	2.32
KZBSS-12PF	G1 1/2	82	26	63	69	KZBSS-N12PF	NPT1 1/2	3.22	1.02	2.48	2.72
KZBSS-16PF	G2	88	28	77	84	KZBSS-N16PF	NPT2	3.46	1.1	3.03	3.3

### Couplers

#### Female Thread



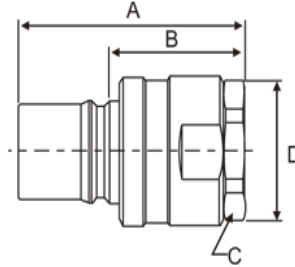
Part No.	Thread size BSPP	E Overall Length (mm.)	F Hex Size (mm.)	G Largest Diameter (mm.)	Part No.	Thread size NPT	E Overall Length (mm.)	F Hex Size (mm.)	G Largest Diameter (mm.)
KZBSS-01SF	G1/8	48	17	24	KZBSS-N01SF	NPT1/8	1.9	0.68	0.96
KZBSS-02SF	G1/4	57	21	29	KZBSS-N02SF	NPT1/4	2.26	0.81	1.14
KZBSS-03SF	G3/8	63	22	36	KZBSS-N03SF	NPT3/8	2.49	0.88	1.4
KZBSS-04SF	G1/2	73	28	45	KZBSS-N04SF	NPT1/2	2.87	1.12	1.77
KZBSS-06SF	G3/4	90	33	54	KZBSS-N06SF	NPT3/4	3.56	1.31	2.14
KZBSS-08SF	G1	106	41	64	KZBSS-N08SF	NPT1	4.18	1.62	2.52
KZBSS-10SF	G1 1/4	115	54	79	KZBSS-N10SF	NPT1 1/4	4.53	2.13	3.11
KZBSS-12SF	G1 1/2	124	63	79	KZBSS-N12SF	NPT1 1/2	4.88	2.48	3.11
KZBSS-16SF	G2	132	77	109	KZBSS-N16SF	NPT2	5.2	3.03	4.29

## 1.4-02 ISO 7241 B SERIES HYDRAULIC QUICK COUPLINGS

### Specifications of KZBF Series

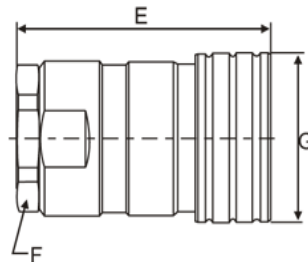
Body size (in)	1 1/2
Rated pressure (Bar)	100
Material:	Steel / Brass / Stainless Steel
Standard seal material:	NBR (other material is available on request)
Temperature range (Std seals):	-20°C to +80°C

### Nipples Female Thread



Part No.	Thread size BSP	A Overall Length (mm.)	B Exposed Length (mm.)	C Hex Size (mm.)	D Largest Diameter (mm.)	Part No.	Thread size NPT	A Overall Length (in.)	B Exposed Length (in.)	C Hex Size (in.)	D Largest Diameter (in.)
Material: Steel						Material: Steel					
KZBF-10PF	G1-1/4"	121	68	60	70	KZBF-N10PF	NPT1-1/4"	4.77	2.69	2.38	2.75
KZBF-12PF	G1-1/2"	121	68	60	70	KZBF-N12PF	NPT1-1/2"	4.77	2.69	2.38	2.75
Material: Brass						Material: Brass					
KZBF-10PF-B	G1-1/4"	121	68	60	70	KZBF-N10PF-B	NPT1-1/4"	4.77	2.69	2.38	2.75
KZBF-12PF-B	G1-1/2"	121	68	60	70	KZBF-N12PF-B	NPT1-1/2"	4.77	2.69	2.38	2.75
Material: Stainless Steel						Material: Stainless Steel					
KZBF-10PF-S	G1-1/4"	121	68	60	70	KZBF-N10PF-S	NPT1-1/4"	4.77	2.69	2.38	2.75
KZBF-12PF-S	G1-1/2"	121	68	60	70	KZBF-N12PF-S	NPT1-1/2"	4.77	2.69	2.38	2.75

### Couplers Female Thread



Part No.	Thread size BSP	E Overall Length (mm.)	F Hex Size (mm.)	G Largest Diameter (mm.)	Part No.	Thread size NPT	E Overall Length (mm.)	F Hex Size (mm.)	G Largest Diameter (mm.)
Material: Steel					Material: Steel				
KZBF-10SF	G1-1/4"	122	191	80	KZBF-N10SF	NPT1-1/4"	4.82	7.52	3.13
KZBF-12SF	G1-1/2"	122	191	80	KZBF-N12SF	NPT1-1/2"	4.82	7.52	3.13
Material: Brass					Material: Brass				
KZBF-10SF-B	G1-1/4"	122	191	80	KZBF-N10SF-B	NPT1-1/4"	4.82	7.52	3.13
KZBF-12SF-B	G1-1/2"	122	191	80	KZBF-N12SF-B	NPT1-1/2"	4.82	7.52	3.13
Material: Stainless Steel					Material: Stainless Steel				
KZBF-10SF-S	G1-1/4"	122	191	80	KZBF-N10SF-S	NPT1-1/4"	4.82	7.52	3.13
KZBF-12SF-S	G1-1/2"	122	191	80	KZBF-N12SF-S	NPT1-1/2"	4.82	7.52	3.13



## 1.4-03 DOUBLE SHUT-OFF COUPLINGS WITH HARDEND STEEL POPPETS

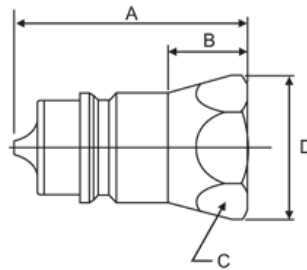
### PIONEER 4000 SERIES INTERCHANGE

#### Specifications of KPC Series

Body size (in)	1/4	3/8	1/2	3/4	1
Rated pressure (Bar)	200	200	200	200	200
Rated Flow (GPM)	3	6	12	28	50
Temperature range (Std seals):	-20°C to +80°C				

#### Nipples

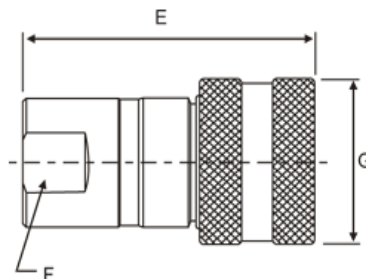
##### Female Thread



Part No.	Thread size BSPP	A Overall Length (mm.)	B Exposed Length (mm.)	C Hex Size (mm.)	D Largest Diameter (mm.)	Part No.	Thread size NPT	A Overall Length (in.)	B Exposed Length (in.)	C Hex Size (in.)	D Largest Diameter (in.)
KPC-02PF	G1/4	33	16	19	22	KPC-N02PF	NPT1/4	1.31	0.63	0.75	0.87
KPC-03PF	G3/8	41	20	24	27	KPC-N03PF	NPT3/8	1.6	0.8	0.94	1.08
KPC-04PF	G1/2	50	15	27	31	KPC-N04PF	NPT1/2	1.95	0.59	1.06	1.23
KPC-06PF	G3/4	46	31	33	39	KPC-N06PF	NPT3/4	1.81	1.23	1.31	1.52
KPC-08PF	G1	71	38	41	48	KPC-N08PF	NPT1	2.79	1.49	1.63	1.88

#### Couplers

##### Female Thread



Part No.	Thread size BSPP	E Overall Length (mm.)	F Hex Size (mm.)	G Largest Diameter (mm.)	Part No.	Thread size NPT	E Overall Length (mm.)	F Hex Size (mm.)	G Largest Diameter (mm.)
KPC-02SF	G1/4	49	19	27	KPC-N02SF	NPT1/4	1.94	0.75	1.08
KPC-03SF	G3/8	59	24	34	KPC-N03SF	NPT3/8	2.31	0.94	1.33
KPC-04SF	G1/2	66	27	39	KPC-N04SF	NPT1/2	2.60	1.06	1.52
KPC-06SF	G3/4	89	35	48	KPC-N06SF	NPT3/4	3.50	1.38	1.90
KPC-08SF	G1	98	41	53	KPC-N08SF	NPT1	3.84	1.63	2.08

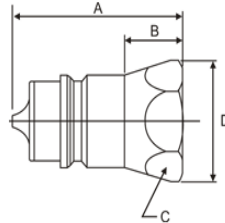
## 1.4-04 PUSH AND PULL TYPE HYDRAULIC QUICK COUPLINGS

### Specifications of KZA Series

Body size (in)	3/8	1/2
Rated pressure (Bar)	200	200
Material:	Carbon Steel	
Standard seal material:	NBR (other material is available on request)	
Temperature range (Std seals):	-20°C to +80°C	

### Nipples

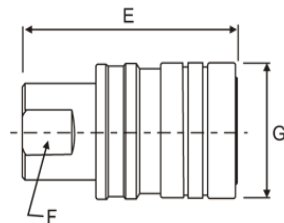
#### Female Thread



Part No.	Thread size BSPP	A Overall Length (mm.)	B Exposed Length (mm.)	C Hex Size (mm.)	D Largest Diameter (mm.)	Part No.	Thread size NPT	A Overall Length (in.)	B Exposed Length (in.)	C Hex Size (in.)	D Largest Diameter (in.)
KZA-03PF	G3/8"	41	20	24	27	KZA-N03PF	NPT3/8"	1.6	0.8	0.94	1.08
KZA-04PF	G1/2"	50	28	27	31	KZA-N04PF	NPT1/2"	1.95	1.09	1.06	1.23

### Couplers

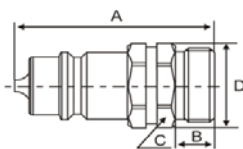
#### Female Thread



Part No.	Thread size BSPP	E Overall Length (mm.)	F Hex Size (mm.)	G Largest Diameter (mm.)	Part No.	Thread size NPT	E Overall Length (mm.)	F Hex Size (mm.)	G Largest Diameter (mm.)
KZA-03SF	G3/8"	59	21	33	KZA-N03SF	NPT3/8"	2.31	0.81	1.31
KZA-04SF	G1/2"	68	24	38	KZA-N04SF	NPT1/2"	2.68	0.94	1.5

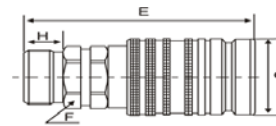
### Nipples

#### Female Thread



### Couplers

#### Female Thread

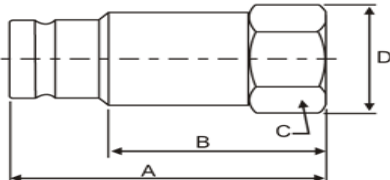



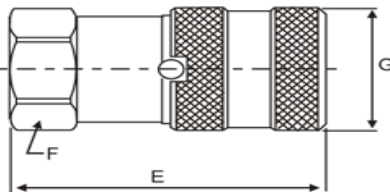

Part No.	Thread size BSPP	A Overall Length (mm.)	B Exposed Length (mm.)	C Hex Size (mm.)	D Largest Diameter (mm.)	Part No.	Thread size BSPP	E Overall Length (mm.)	F Hex Size (mm.)	G Largest Diameter (mm.)
KZA-14PF-M	M14X1.5	56	12	27	31	KZA-14SF-M	M14X1.5	72	27	38
KZA-16PF-M	M16X1.5	56	12	27	31	KZA-16SF-M	M16X1.5	72	27	38
KZA-18PF-M	M18X1.5	56	12	27	31	KZA-18SF-M	M18X1.5	72	27	38
KZA-22PF-M	M22X1.5	56	12	27	31	KZA-22SF-M	M22X1.5	72	27	38

## 1.4-05 FLAT FACE HYDRAULIC QUICK COUPLINGS / INTERNATIONAL INTERCHANGE ISO 16028

### Specifications of QKPT Series

Body size (in)	1/4	3/8	1/2	3/4	1
Rated pressure (Bar)	300	250	200	200	200
Material:	Carbon steel				
Standard seal material:	NBR (other material is available on request)				
Temperature range (Std seals):	-20°C to +80°C				

Nipples Female Thread	Part No.	Thread size BSPP	Body Size	A	B	C	D
				Overall Length (mm.)	Exposed Length (mm.)	Hex Size (mm.)	Largest Diameter (mm.)
 	QKPT 02-02PF	G1/4	1/4"	48	35	22	24
	QKPT 03-03PF	G3/8	3/8"	60	43	24	26
	QKPT 03-04PF	G1/2	3/8"	63	46	27	29
	QKPT 04-04PF	G1/2	1/2"	70	53	32	35
	QKPT 04-06PF	G3/4	1/2"	70	53	32	35
	QKPT 06-06PF	G3/4	3/4"	70	53	36	38
	QKPT 08-08PF	G1	1	83	59	45	48
	Part No.	Thread size NPT	Body Size	A	B	C	D
	Overall Length (in.)	Exposed Length (in.)	Hex Size (in.)	Largest Diameter (in.)			
	QKPT 02-N02PF	NPT1/4	1/4"	1.88	1.37	0.86	0.94
	QKPT 03-N03PF	NPT3/8	3/8"	2.36	1.69	0.94	1.02
	QKPT 03-N04PF	NPT1/2	3/8"	2.48	1.81	1.06	1.14
	QKPT 04-N04PF	NPT1/2	1/2"	2.77	2.08	1.25	1.37
	QKPT 04-N06PF	NPT3/4	1/2"	2.77	2.08	1.25	1.37
	QKPT 06-N06PF	NPT3/4	3/4"	2.77	2.08	1.41	1.51
	QKPT 08-N08PF	NPT1	1	3.26	2.32	1.77	1.88

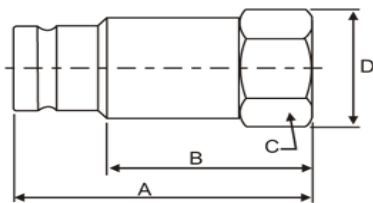
Couplers Female Thread	Part No.	Thread size BSPP	Body Size	E	F	G
				Overall Length (mm.)	Hex Size (mm.)	Largest Diameter (mm.)
 	QKPT 02-02SF	G1/4	1/4"	48	24.0	28
	QKPT 03-03SF	G3/8	3/8"	65	27	32
	QKPT 03-04SF	G1/2	3/8"	70	27	32
	QKPT 04-04SF	G1/2	1/2"	79	36	40
	QKPT 04-06SF	G3/4	1/2"	79	36	40
	QKPT 06-06SF	G3/4	3/4"	79	36	41
	QKPT 08-08SF	G1	1	93	45	48
	Part No.	Thread size NPT	Body Size	E	F	G
	Overall Length (mm.)	Hex Size (mm.)	Largest Diameter (mm.)			
	QKPT 02-N02SF	NPT1/4	1/4"	1.88	0.94	1.1
	QKPT 03-N03SF	NPT3/8	3/8"	2.55	1.06	1.25
	QKPT 03-N04SF	NPT1/2	3/8"	2.75	1.06	1.25
	QKPT 04-N04SF	NPT1/2	1/2"	3.11	1.41	1.57
	QKPT 04-N06SF	NPT3/4	1/2"	3.11	1.41	1.57
	QKPT 06-N06SF	NPT3/4	3/4"	3.11	1.41	1.63
	QKPT 08-N08SF	NPT1	1	3.66	1.77	1.88

### Specifications of QKPB Series

Body size (in)	1/4	3/8	1/2	3/4	1
Rated pressure (Bar)	150	100	100	100	75
Material:	Brass				
Standard seal material:	NBR (other material is available on request)				
Temperature range (Std seals):	-20°C to +80°C				

### Nipples

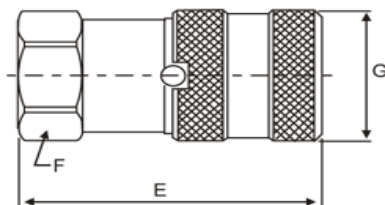
#### Female Thread



Part No.	Thread size BSPP	Body Size	A Overall Length (mm.)	B Exposed Length (mm.)	C Hex Size (mm.)	D Largest Diameter (mm.)
QKPB 02-02PF	G1/4	1/4"	48	35	22	24
QKPB 03-03PF	G3/8	3/8"	60	43	24	26
QKPB 03-04PF	G1/2	3/8"	63	46	27	29
QKPB 04-04PF	G1/2	1/2"	70	53	32	35
QKPB 04-06PF	G3/4	1/2"	70	53	32	35
QKPB 06-06PF	G3/4	3/4"	70	53	36	38
QKPB 08-08PF	G1	1"	83	59	45	48
Part No.	Thread size NPT	Body Size	A Overall Length (in.)	B Exposed Length (in.)	C Hex Size (in.)	D Largest Diameter (in.)
QKPB 02-N02PF	NPT1/4	1/4"	1.88	1.37	0.86	0.94
QKPB 03-N03PF	NPT3/8	3/8"	2.36	1.69	0.94	1.02
QKPB 03-N04PF	NPT1/2	3/8"	2.48	1.81	1.06	1.14
QKPB 04-N04PF	NPT1/2	1/2"	2.77	2.08	1.25	1.37
QKPB 04-N06PF	NPT3/4	1/2"	2.77	2.08	1.25	1.37
QKPB 06-N06PF	NPT3/4	3/4"	2.77	2.08	1.41	1.51
QKPB 08-N08PF	NPT1	1"	3.26	2.32	1.77	1.88

### Couplers

#### Female Thread

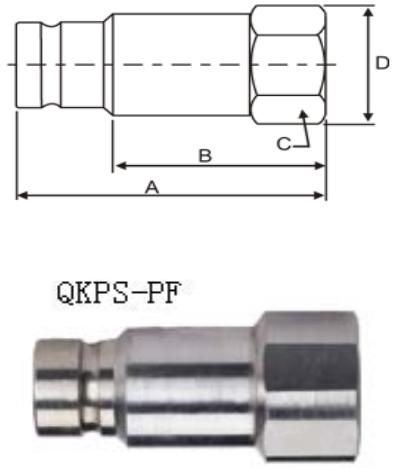


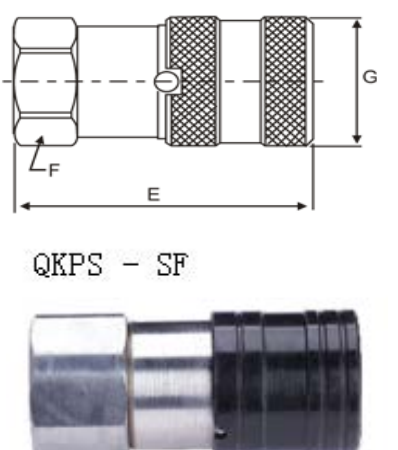
Part No.	Thread size BSPP	Body Size	E Overall Length (mm.)	F Hex Size (mm.)	G Largest Diameter (mm.)
QKPB 02-02SF	G1/4	1/4"	48	24	28
QKPB 03-03SF	G3/8	3/8"	65	27	32
QKPB 03-04SF	G1/2	3/8"	70	27	32
QKPB 04-04SF	G1/2	1/2"	79	36	40
QKPB 04-06SF	G3/4	1/2"	79	36	40
QKPB 06-06SF	G3/4	3/4"	79	36	41
QKPB 08-08SF	G1	1"	93	45	48
Part No.	Thread size NPT	Body Size	E Overall Length (mm.)	F Hex Size (mm.)	G Largest Diameter (mm.)
QKPB 02-N02SF	NPT1/4	1/4"	1.88	0.94	1.1
QKPB 03-N03SF	NPT3/8	3/8"	2.55	1.06	1.25
QKPB 03-N04SF	NPT1/2	3/8"	2.75	1.06	1.25
QKPB 04-N04SF	NPT1/2	1/2"	3.11	1.41	1.57
QKPB 04-N06SF	NPT3/4	1/2"	3.11	1.41	1.57
QKPB 06-N06SF	NPT3/4	3/4"	3.11	1.41	1.63
QKPB 08-N08SF	NPT1	1"	3.66	1.77	1.88

## 1.4-05 FLAT FACE HYDRAULIC QUICK COUPLINGS / INTERNATIONAL INTERCHANGE ISO 16028

### Specifications of QKPS Series

Body size (in)	1/4	3/8	1/2	3/4	1
Rated pressure (Bar)	250	250	200	200	200
Material:	Stainless Steel				
Standard seal material:	NBR (other material is available on request)				
Temperature range (Std seals):	-20°C to +80°C				

Nipples Female Thread	Part No.	Thread size BSPP	Body Size	A	B	C	D
				Overall Length (mm.)	Exposed Length (mm.)	Hex Size (mm.)	Largest Diameter (mm.)
 <p>QKPS-PF</p>	QKPS 02-02PF	G1/4	1/4"	48	35	22	24
	QKPS 03-03PF	G3/8	3/8"	60	43	24	26
	QKPS 03-04PF	G1/2	3/8"	63	46	27	29
	QKPS 04-04PF	G1/2	1/2"	70	53	32	35
	QKPS 04-06PF	G3/4	1/2"	70	53	32	35
	QKPS 06-06PF	G3/4	3/4"	70	53	36	38
	QKPS 08-08PF	G1	1"	83	59	45	48
	Part No.	Thread size NPT	Body Size	A	B	C	D
	Overall Length (in.)	Exposed Length (in.)	Hex Size (in.)	Largest Diameter (in.)			
	QKPS 02-N02PF	NPT1/4	1/4"	1.88	1.37	0.86	0.94
	QKPS 03-N03PF	NPT3/8	3/8"	2.36	1.69	0.94	1.02
	QKPS 03-N04PF	NPT1/2	3/8"	2.48	1.81	1.06	1.14
	QKPS 04-N04PF	NPT1/2	1/2"	2.77	2.08	1.25	1.37
	QKPS 04-N06PF	NPT3/4	1/2"	2.77	2.08	1.25	1.37
QKPS 06-N06PF	NPT3/4	3/4"	2.77	2.08	1.41	1.51	
QKPS 08-N08PF	NPT1	1"	3.26	2.32	1.77	1.88	

Couplers Female Thread	Part No.	Thread size BSPP	Body Size	E	F	G
				Overall Length (mm.)	Hex Size (mm.)	Largest Diameter (mm.)
 <p>QKPS - SF</p>	QKPS 02-02SF	G1/4	1/4"	48	24	28
	QKPS 03-03SF	G3/8	3/8"	65	27	32
	QKPS 03-04SF	G1/2	3/8"	70	27	32
	QKPS 04-04SF	G1/2	1/2"	79	36	40
	QKPS 04-06SF	G3/4	1/2"	79	36	40
	QKPS 06-06SF	G3/4	3/4"	79	36	41
	QKPS 08-08SF	G1	1"	93	45	48
	Part No.	Thread size NPT	Body Size	E	F	G
	Overall Length (mm.)	Hex Size (mm.)	Largest Diameter (mm.)			
	QKPS 02-N02SF	NPT1/4	1/4"	1.88	0.94	1.1
	QKPS 03-N03SF	NPT3/8	3/8"	2.55	1.06	1.25
	QKPS 03-N04SF	NPT1/2	3/8"	2.75	1.06	1.25
	QKPS 04-N04SF	NPT1/2	1/2"	3.11	1.41	1.57
	QKPS 04-N06SF	NPT3/4	1/2"	3.11	1.41	1.57
QKPS 06-N06SF	NPT3/4	3/4"	3.11	1.41	1.63	
QKPS 08-N08SF	NPT1	1"	3.66	1.77	1.88	

## 1.4-06 THREAD-TO-CONNECT UNDER PRESSURE COUPLINGS

### Specifications of QKTF Series

Body size (in)	3/4	1	1 1/4
Rated pressure (Bar)	200	200	200
Material:	Brass / Carbon Steel		
Standard seal material:	NBR (other material is available on request)		
Temperature range (Std seals):	-20°C to +80°C		

Couplers Wing Nut	Part No.	Thread size NPT	Body Size	A Overall Length (in.)	B Wrench Flats (in.)	C Wing Nut (mm.)
	QKTF 06-N04SF	NPT1/2	3/4"	3.22	1.16	4.06
	QKTF 06-N06SF	NPT3/4	3/4"	3.22	1.16	4.06
	QKTF 08-N08SF	NPT1	1"	3.87	1.43	4.38
	QKTF 10-N10SF	NPT1 1/4	1 1/4"	4.16	1.78	5.20
Contact us for BSPP port availability						

Hex Nut	Part No.	Thread size NPT	Body Size	A Overall Length (in.)	B Wrench Flats (in.)	C Wing Nut (mm.)
	QKTF 06-N04HF	NPT1/2	3/4"	3.22	1.16	1.75
	QKTF 06-N06HF	NPT3/4	3/4"	3.22	1.16	1.75
	QKTF 08-N08HF	NPT1	1"	3.87	1.43	2.13
	QKTF 10-N10HF	NPT1 1/4	1.1/4"	4.16	1.78	2.50
Contact us for BSPP port availability						

Nipples	Part No.	Thread size NPT	Body Size	A Overall Length (in.)	B Wrench Flats (in.)	C Wing Nut (mm.)
	QKTF 06-N04PF	NPT1/2	3/4"	3.11	1.62	1.18
	QKTF 06-N06PF	NPT3/4	3/4"	3.11	1.62	1.18
	QKTF 08-N08PF	NPT1	1"	3.55	1.88	1.56
	QKTF 10-N10PF	NPT1 1/4	1.1/4"	3.71	2.13	1.88
Contact us for BSPP port availability						

## 1.4-07 THREAD LOCKED TYPE HYDRAULIC COUPLINGS

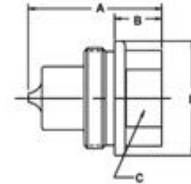
### Poppet Valve Type

#### Specifications of QKTL Series

Body size (in)	1/4	3/8	1/2	3/4
Rated pressure (Bar)	750	750	600	600
Rated Flow (GPM)	3	6	8	10
Temperature range (Std seals):	-20°C to +80°C			

#### Nipples

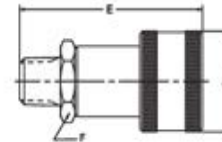
##### Female Thread



Part No.	Thread size BSPP	A Overall Length (mm.)	B Exposed Length (mm.)	C Hex Size (mm.)	D Largestv Diameter (mm.)	Part No.	Thread size NPT	A Overall Length (in.)	B Exposed Length (in.)	C Hex Size (in.)	D Largest Diameter (in.)
QKTL-02PF	G1/4	33	12	19	29	QKTL-N02PF	NPT1/4	1.29	0.48	0.75	1.13
QKTL-03PF	G3/8	40	13	24	32	QKTL-N03PF	NPT3/8	1.58	0.5	0.94	1.25
QKTL-04PF	G1/2	49	22	27	38	QKTL-N04PF	NPT1/2	1.92	0.86	1.06	1.49
QKTL-06PF	G3/4	70	40	50	56	QKTL-N06PF	NPT3/4	2.75	1.57	1.96	2.2

#### Couplers

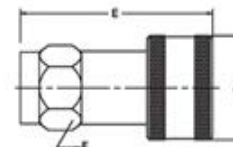
##### Male Thread



Part No.	Thread size BSPP	E Overall Length (mm.)	F Hex Size (mm.)	G Largestv Diameter (mm.)	Part No.	Thread size NPT	E Overall Length (mm.)	F Hex Size (mm.)	G Largestv Diameter (mm.)
QKTL-02SFM	G1/4	60	21	29	QKTL-N02SFM	NPT1/4	2.38	0.81	1.13
QKTL-03SFM	G3/8	73	25	35	QKTL-N03SFM	NPT3/8	2.88	1	1.38
QKTL-04SFM	G1/2	63	27	45	QKTL-N04SFM	NPT1/2	2.48	1.06	1.77
QKTL-06SFM	G3/4	82	38	42	QKTL-N06SFM	NPT3/4	3.22	1.49	1.65

#### Couplers

##### Female Thread



Part No.	Thread size BSPP	E Overall Length (mm.)	F Hex Size (mm.)	G Largestv Diameter (mm.)	Part No.	Thread size NPT	E Overall Length (mm.)	F Hex Size (mm.)	G Largestv Diameter (mm.)
QKTL-02SFF	G1/4	60	21	29	QKTL-N02SF	NPT1/4	2.38	0.81	1.13
QKTL-03SFF	G3/8	73	25	35	QKTL-N03SF	NPT3/8	2.88	1	1.38
QKTL-04SFF	G1/2	63	27	45	QKTL-N04SF	NPT1/2	2.48	1.06	1.77
QKTL-06SFF	G3/4	82	38	42	QKTL-N06SF	NPT3/4	3.22	1.49	1.65

## 1.4-07 THREAD LOCKED TYPE HYDRAULIC COUPLINGS

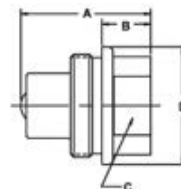
### Steel Ball Valve Type

#### Specifications of QKTL-B Series

Body size (in)	1/4	3/8	1/2	3/4
Rated pressure (Bar)	750	750	600	600
Rated Flow (GPM)	3	6	8	10
Temperature range (Std seals):	-20°C to +80°C			

#### Nipples

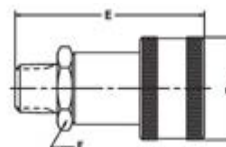
##### Female Thread



Part No.	Thread size BSPP	A Overall Length (mm.)	B Exposed Length (mm.)	C Hex Size (mm.)	D Largestv Diameter (mm.)	Part No.	Thread size NPT	A Overall Length (in.)	B Exposed Length (in.)	C Hex Size (in.)	D Largest Diameter (in.)
QKTL-02PF-B	G1/4	33	12	19	29	QKTL-N02PF-B	NPT1/4	1.29	0.48	0.75	1.13
QKTL-03PF-B	G3/8	40	13	24	32	QKTL-N03PF-B	NPT3/8	1.58	0.5	0.94	1.25
QKTL-04PF-B	G1/2	49	22	27	38	QKTL-N04PF-B	NPT1/2	1.92	0.86	1.06	1.49
QKTL-06PF-B	G3/4	70	40	50	56	QKTL-N06PF-B	NPT3/4	2.75	1.57	1.96	2.2

#### Couplers

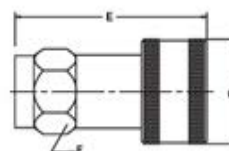
##### Male Thread



Part No.	Thread size BSPP	E Overall Length (mm.)	F Hex Size (mm.)	G Largestv Diameter (mm.)	Part No.	Thread size NPT	E Overall Length (mm.)	F Hex Size (mm.)	G Largestv Diameter (mm.)
QKTL-02SFM-B	G1/4	60	21	29	QKTL-N02SFM-B	NPT1/4	2.38	0.81	1.13
QKTL-03SFM-B	G3/8	73	25	35	QKTL-N03SFM-B	NPT3/8	2.88	1	1.38
QKTL-04SFM-B	G1/2	63	27	45	QKTL-N04SFM-B	NPT1/2	2.48	1.06	1.77
QKTL-06SFM-B	G3/4	82	38	42	QKTL-N06SFM-B	NPT3/4	3.22	1.49	1.65

#### Couplers

##### Female Thread



Part No.	Thread size BSPP	E Overall Length (mm.)	F Hex Size (mm.)	G Largestv Diameter (mm.)	Part No.	Thread size NPT	E Overall Length (mm.)	F Hex Size (mm.)	G Largestv Diameter (mm.)
QKTL-02SFF-B	G1/4	60	21	29	QKTL-N02SFF-B	NPT1/4	2.38	0.81	1.13
QKTL-03SFF-B	G3/8	73	25	35	QKTL-N03SFF-B	NPT3/8	2.88	1	1.38
QKTL-04SFF-B	G1/2	63	27	45	QKTL-N04SFF-B	NPT1/2	2.48	1.06	1.77
QKTL-06SFF-B	G3/4	82	38	42	QKTL-N06SFF-B	NPT3/4	3.22	1.49	1.65

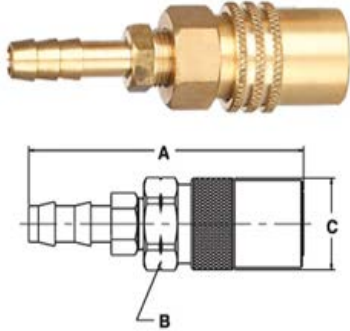


## 1.4-08 MOLD COOLANT-LINE QUICK COUPLERS/ D-M-E PARKER AND POSTER INTERCHANGE

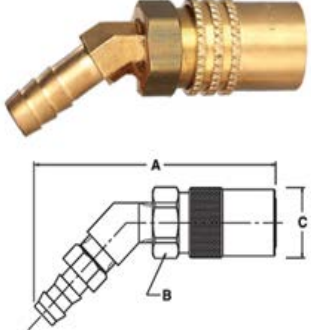
### Specifications of Mold Coolant Line Couplers

Body size (in)	1/4"	3/8"	1/2"
Rated pressure (Bar)	15	15	15
Material:	Brass		
Standard seal material:	NBR (other material is available on request)		
Temperature range (Std seals):	-20°C to +80°C		

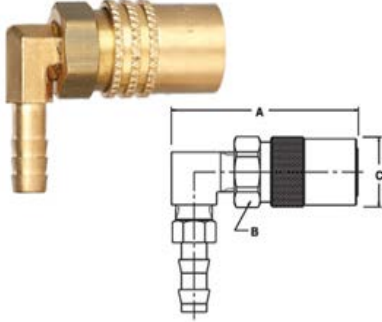
### Coupler - Straight

	Part No.	Hose I.D	A Overall Length (in.)	B Exposed Length (in.)	C Hex Size (in.)
	PC204	1/4"	2.1	0.62	0.71
	PC205	5/16"	2.1	0.62	0.71
	PC206	3/8"	2.1	0.62	0.71
	PC306	3/8"	3.01	0.88	0.96
	PC308	1/2"	3.15	0.88	0.96
	PC504	1/2"	3.55	1.12	1.3
	PC506	3/4"	3.8	1.12	1.21

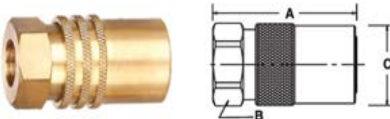
### Coupler - 45 Degree

	Part No.	Hose I.D	A Overall Length (in.)	B Exposed Length (in.)	C Hex Size (in.)
	PC224	40912	2.67	0.56	0.71
	PC225	41045	2.69	0.56	0.71
	PC226	40976	2.71	0.56	0.71
	PC326	40976	3.65	0.88	0.96
	PC328	40910	3.69	0.88	0.96
	PC524	40910	4.18	1.12	1.3
	PC526	40972	4.56	1.12	1.21

### Coupler - 90 Degree

	Part No.	Hose I.D	A Overall Length (in.)	B Exposed Length (in.)	C Hex Size (in.)
	PC214	40912	1.78	0.56	0.71
	PC215	41045	1.78	0.56	0.71
	PC216	40976	1.78	0.56	0.71
	PC316	40976	2.78	0.88	0.96
	PC318	40910	2.78	0.88	0.96
	PC514	40910	3.5	1.12	1.3
	PC516	40972	3.5	1.12	1.21

### Sub Assemblies

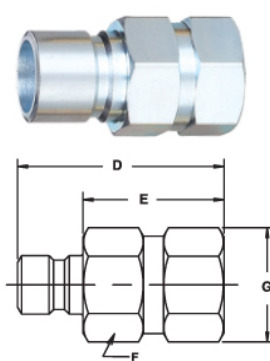
	Part No.	Hose I.D	A Overall Length (in.)	B Exposed Length (in.)	C Hex Size (in.)
	PC214	40912	1.78	0.56	0.71
	PC215	41045	1.78	0.56	0.71
	PC216	40976	1.78	0.56	0.71

## 1.4-08 MOLD COOLANT-LINE QUICK COUPLERS/ D-M-E PARKER AND POSTER INTERCHANGE

### Specifications of Mold Coolant Line Plugs

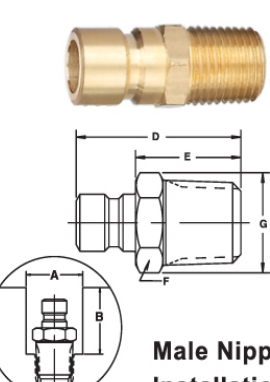
Body size (in)	1/4"	3/8"	1/2"
Rated pressure (Bar)	15	15	15
Material:	Brass		
Standard seal material:	Silicone (Viton is available on request)		
Temperature range (Std)	-20°C to +80°C		

### Nipples - Female Pipe Thread



Part No.	Thread Size NPT	D Overall Length (in.)	E Exposed Length	F Hex Size (in.)	G Largest Dia. (in.)
MP251F	1/8"	0.97	0.58	0.58	0.5
MP252F	1/4"	1.28	0.89	0.72	0.63
MP253F	3/8"	1.41	1.02	0.87	0.75
MP352F	1/4"	1.48	0.88	0.72	0.63
MP353F	3/8"	1.58	0.98	0.87	0.75
MP354F	1/2"				
MP356F	3/4"				

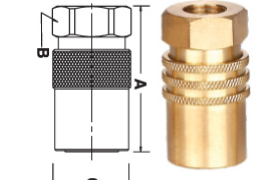
### Male Pipe Thread



**Male Nipple Installation**

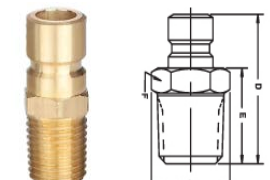
Part No.	Thread Size NPT	D Overall Length (in.)	E Exposed Length	F Hex Size (in.)	G Largest Dia. (in.)	A Largest Dia. (in.)	B Recess (in.)
PN251	1/8"	0.94	0.54	0.44	0.51	0.69	0.69
PN252	1/4"	1.13	0.74	0.56	0.67	0.84	0.94
PN253	3/8"	1.19	0.79	0.69	0.79	1	0.94
PN352	1/4"	1.34	0.74	0.56	0.65	1	1.09
PN353	3/8"	1.38	0.78	0.69	0.59	1	1.13
PN354	1/2"	1.59	0.99	0.88	1.01	1.19	1.25
PN554	1/2"	1.69	0.92	0.88	1.01	1.25	1.5
PN556	3/4"	1.75	0.99	1.12	1.3	1.5	1.56

### Sub Assemblies



Part No.	Thread Size NPT	A Overall Length (in.)	B Exposed Length (in.)	C Hex Size (in.)
PC200V	1/8"	1.15	0.56	0.71
PC300V	1/4"	1.84	0.88	0.96

### Male Pipe Thread

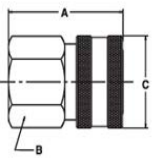


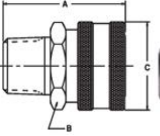
Part No.	Thread Size NPT	D Overall Length (in.)	E Exposed Length	F Hex Size (in.)	G Largest Dia. (in.)
PN252V	1/4"	1.13	0.74	0.56	0.67
PN352V	1/4"	1.34	0.74	0.56	0.65
PN353V	3/8"	1.38	1.38	0.69	0.59

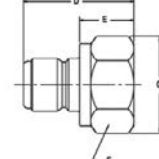
## 1.4-09 STRAIGHT THROUGH COUPLINGS / INDUSTRIAL INTERCHANGE

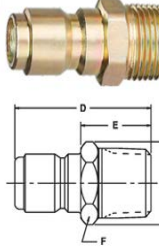
### Specifications of ST Series

Body size (in)	1/8"	1/4"	3/8"	1/2"	3/4"	1"	1.1/4"	1.1/2"
Rated pressure (PSI) - Brass	2500	5200	2700	2200	1700	1200	1700	1400
Rated pressure (PSI) - Steel	2600	5500	3500	2700	2700	2000	-	-
Rated pressure (PSI) -	4200	6700	5500	3000	1700	-	-	-
Rated Flow:	3	6	12	12	28	50	76	100
Temperature range (Std)	-20°C to +100°C							

<b>Couplers Female Thread</b> 	Part No. (Brass)	Part No. (Stainless)	Thread Size NPT	A Overall Length (in.)	B Wrench Flate (in.)	G Largest Dia. (in.)
	ST1SF	ST1SF-304	1/8"	1.06	0.56	0.69
	ST2SF	ST2SF-304	1/4"	1.54	0.81	0.94
	ST3SF	ST3SF-304	3/8"	1.59	1.00	1.16
	ST4SF	ST4SF-304	1/2"	1.98	1.13	1.30
	ST6SF	ST6SF-304	3/4"	2.15	1.44	1.66
	ST8SF	ST8SF-304	1"	2.43	1.75	2.02
	ST10SF		1.1/4"	2.44	2.00	2.51
	ST2SF		1.1/2"	2.88	2.50	3.00

<b>Couplers Male Thread</b> 	Part No. (Brass)	Part No. (Stainless)	Thread Size NPT	A Overall Length (in.)	B Wrench Flate (in.)	G Largest Dia. (in.)
	ST1SM	ST1SM-304	1/8"	1.06	0.56	0.69
	ST2SM	ST2SM-304	1/4"	1.69	0.81	0.81
	ST3SM	ST3SM-304	3/8"	1.75	1.00	1.16
	ST4SM	ST4SM-304	1/2"	1.94	1.13	1.30
	ST6SM		3/4"	2.17	1.44	1.66
	ST8SM		1"	2.53	1.75	2.02


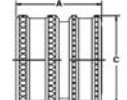
<b>Nipples Female Thread</b> 	Part No. (Brass)	Part No. (Stainless)	Part No. (Steel)	Thread Size NPT	D Overall Length (in.)	E Exposed Length (in.)	F Hex Size (in.)	G Largest Dia. (in.)
	ST1PF	ST1PF-304	ST1PF-S	1/8"	0.98	0.57	0.56	0.65
	ST2PF	ST2PF-304	ST2PF-S	1/4"	1.46	0.74	0.5	0.87
	ST3PF	ST3PF-304	ST3PF-S	3/8"	1.62	0.96	1.38	1.59
	ST4PF	ST4PF-304	ST4PF-S	1/2"	1.85	0.95	1.13	1.30
	ST6PF		ST6PF-S	3/4"	2.15	1.09	1.38	1.59
	ST8PF		ST8PF-S	1"	2.35	1.18	1.63	1.88
	ST10PF		ST10PF-S	1.1/4"	2.38	1.11	2.00	2.31
	ST12PF		ST12PF-S	1.1/2"	2.81	1.17	2.38	2.74


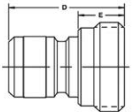
<b>Nipples Male Thread</b> 	Part No.	Thread Size NPT	Part No. (Steel)	Thread Size NPT	D Overall Length (in.)	E Exposed Length (in.)	F Hex Size (in.)	G Largest Dia. (in.)
	ST1PM	ST1PM-304	ST1PM-S	1/8"	1.04	0.63	0.44	0.59
	ST2PM	ST2PM-304	ST2PM-S	1/4"	1.53	0.81	0.56	0.65
	ST3PM	ST3PM-304	ST3PM-S	3/8"	1.69	0.86	0.69	0.79
	ST4PM	ST4PM-304	ST4PM-S	1/2"	1.94	1.01	0.88	1.01
	ST6PM		ST6PM-S	3/4"	2.19	1.11	1.06	1.23
	ST8PM		ST8PM-S	1"	2.51	1.34	1.38	1.59


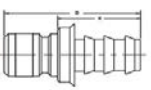
## 1.4-10 GARDEN HOSE COUPLINGS

### Specifications of Garden Hose Couplings

Body size (in)	3/4"
Rated pressure (PSI)	200
Rated Flow (GPM)	28
Temperature range (Std)	-20°C to +100°C

Couplers Female Thread  	Part No.	Body Size	Thread Size NH	A Overall Length (in.)	C Largest Dia. (in.)	Wt.(LB.) P/Piece (in.)
		GH-60SF	3/4"	3/4"-11 1/2	1.16	1.21


Nipple Male Thread  	Part No.	Body Size	Thread Size NH	A Overall Length (in.)	C Largest Dia. (in.)	Wt.(LB.) P/Piece (in.)
		GH-60PF	3/4"	3/4"-11 1/2	1.25	0.5


Nipple Hose Stem  	Part No.	Body Size	Thread Size NH	A Overall Length (in.)	C Largest Dia. (in.)	Wt.(LB.) P/Piece (in.)
		GH-60HF	3/4"	3/4"-11 1/2	1.78	1.00


## 1.4-11 DUST PLUGS AND DUST CAPS

**Dust Plug:** Used on Coupler (female half)

**Dust Cap:** Used on Nipple (Male Half)

<b>KZE Series</b> 	<b>Body Size</b>	<b>Dust Plug Part No. Rubber</b>	<b>Dust Plug Part No. Rubber</b>
	1/4"	CZE-1/4	PZE-1/4
	3/8"	CZE-3/8	PZE-3/8
	1/2"	CZE-1/2	PZE-1/2
	3/4"	CZE-3/4	PZE-3/4
	1"	CZE-1	PZE-1

<b>KZB Series</b> 	<b>Body Size</b>	<b>Dust Plug Part No. Rubber</b>	<b>Dust Plug Part No. Rubber</b>
	1/4"	CZB-1/4	PZB-1/4
	3/8"	CZB-3/8	PZB-3/8
	1/2"	CZB-1/2	PZB-1/2
	3/4"	CZB-3/4	PZB-3/4
	1"	CZB-1	PZB-1

<b>QKTL Series</b> 	<b>Body Size</b>	<b>Dust Plug Part No. Rubber</b>	<b>Dust Plug Part No. Rubber</b>
	1/4"	CTL-1/4	PTL-1/4
	3/8"	CTL-3/8	PTL-3/8

### NOTES

The parameters in this catalogue are for reference only, and their dimensions and proportions may be a little different from those of the real products. Products included in this catalogue don't refer to all, so if customers are interested in other products, please don't hesitate to contact Sinopulse for further information.

Sinopulse has made much effort to record the correct data in this publication. However, in order to promote our products, we may make some changes of their size or description, which haven't been shown yet. We reserve the rights for explanation, but sorry for no further notice to customer the change of products' design, description or even stop of some products' manufacture in future.

#### CONTACT US

SINOPULSE HOSE FACTORY CO., LTD

Address: South Of Xingfu Road, Feixiang Industrial Zone, Handan City, Hebei Province, China.

Phone: +86-310-8678700

Fax: +86-310-8678600

E-Mail: sales@sinopulse.cn

Website: www.sinopulse.cn